



DATA SHEET

SDUH350-UW (SUBSEA)

The Cardev SDUH350-UW Sub Sea filter unit is fitted with all stainless steel connectors, bracket and bolts. The aluminium housing has been anodised in black for extra protection and to reduce reflected glare from work lights. When fitted to the hydraulic system of any sub sea machine it will remove water and particle contamination from the oil.



Cardev International Ltd

Ripon Way, Harrogate, HG1 2AU
Tel: 01423 522911 Fax: 01423 530043
Email: sales@cardev.co.uk or visit our
website at: www.cardev.co.uk



Cardev International Ltd

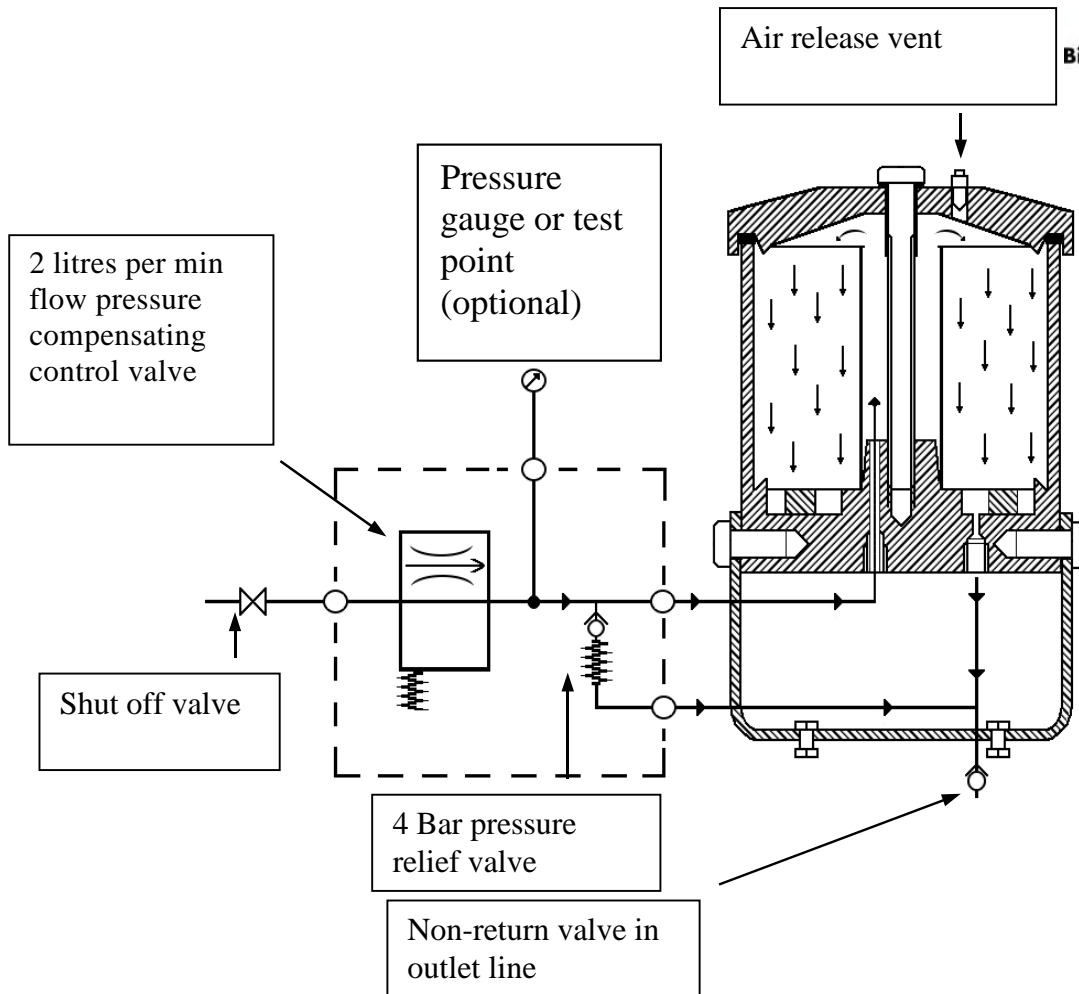
Ripon Way, Harrogate, HG1 2AU Tel: 01423 522911 Fax: 01423 530043
 e-mail: sales@cardev.co.uk web: www.cardev.co.uk



Industrial Filtration



Biodegradable Lubricants



Type	Recommended Installation	Ltr/hr	Lid Torque	Filter element type	Dimensions		Connections		Weight (kg)
					Height (mm)	Dia (mm)	INLET	OUTLET	
SDU H350	By-pass with max. 350 bar inlet and 0.5 bar back pressure up to 400 litres	120	50 Nm	SDFC or SDFC-P	325	238	M12 x 1.5/7/16JIC	M18 x 1.5/3/4JIC	7.5



Certificate No: 8445

Registered in England No: 1753106
 VAT No: 386 0916 27

13.01.05.SS SDUH350-UW